

Chairs

# Le Mans



The comfortable and enveloping Le Mans chair is the brainchild of Matteo Zorzenoni, inspired by the shells of racing car seats. It has a fixed metal base with four legs or central and swivel.



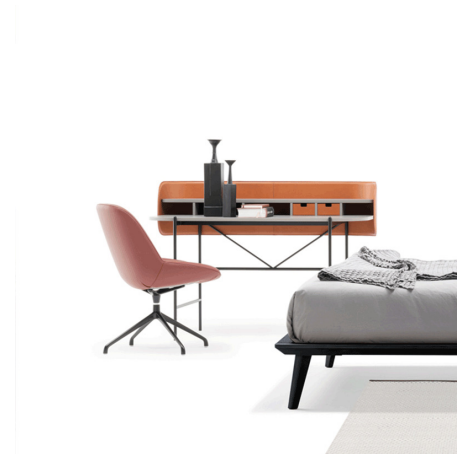
## CHAIR WITH FIXED METAL FRAME

From the automotive industry, in addition to the wrap-around shape of the seat, the Le Mans chair version with metal legs also takes up TIG welding. It is used to achieve a top-quality, well-cleaned exposed joint, added with brass so that it becomes even stronger.



## CHAIR WITH CENTRAL SWIVEL BASE

The Le Mans version chair with a central swivel metal base, on the other hand, is perfect for the home office. It is available in black finish.



## FABRIC, LEATHER OR ECO-LEATHER CHAIR

The wide, comfortable and enveloping seat of Le Mans can be upholstered in various fabric, leather or faux leather finishes. For its inside, we use a single cut of the chosen material, which is then hand-quilted, in a completely handcrafted way, to make it adhere well to the seat. The back of the backrest can also be in a different material or finish than the front and, in the case of faux leather, woven.





## FINISHES

See what finishes are available for the Le Mans chair and start imagining what its version will look like to furnish your space.

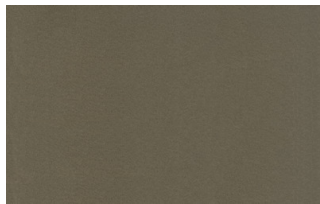
### Metals

#### METALS 1

Metals 1



Black



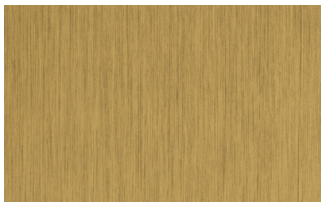
Titanium



Brown

#### METALS 2

Metals 2



Antiqued brass

### Fabrics

#### BASIC

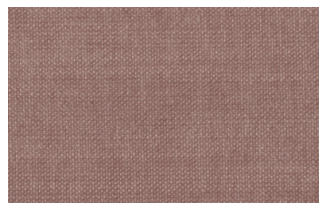
X370



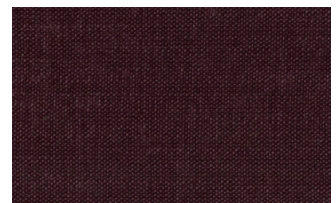
3



4



9

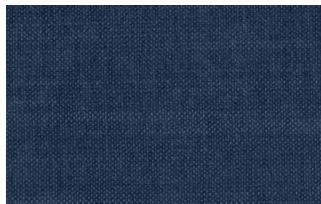


10

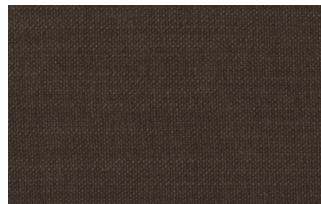




23

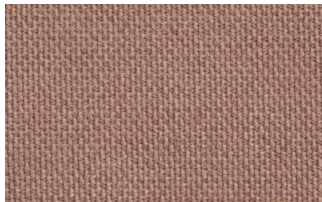


29

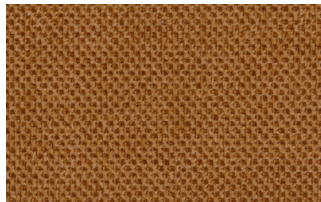


32

## Relax



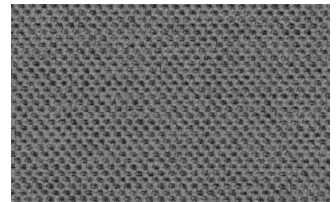
5



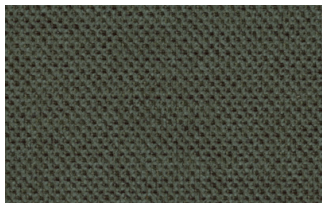
20



25



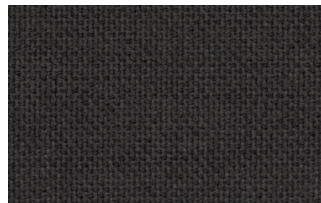
53



62



66



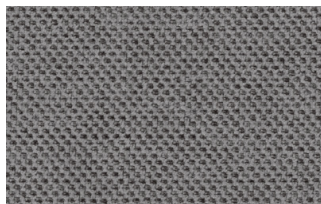
74



81

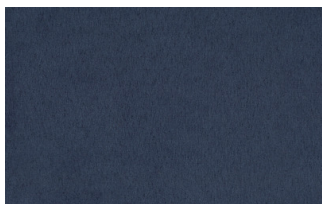


96



103

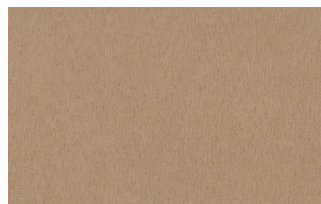
## Divina



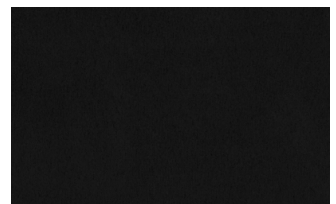
15



19



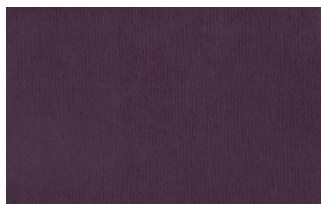
21



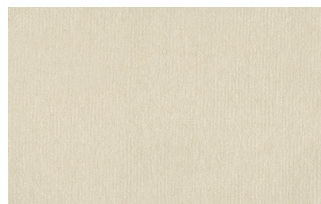
22



34



46



49



50





76



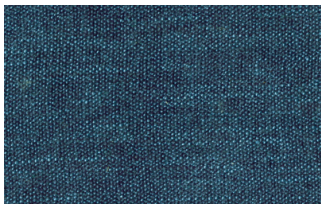
88



561

## START

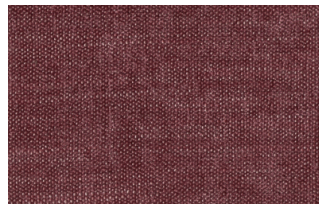
### Scoop



6



7



9



25



31



59

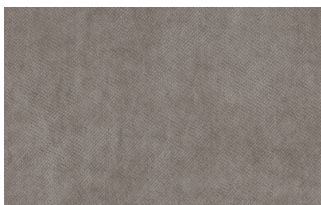


104



561

### Stropiccio



4



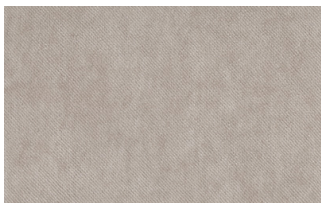
6



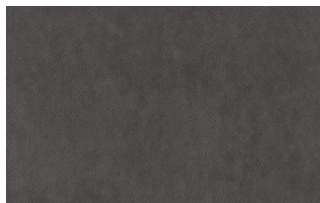
8



17



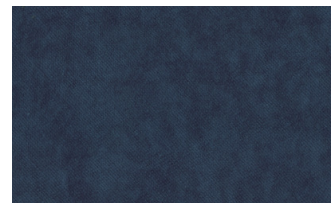
19



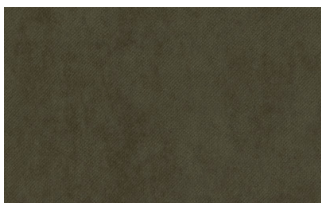
20



22



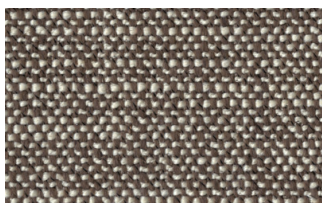
23



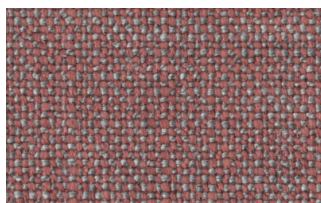
30

### Nodone





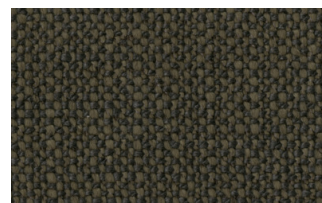
1302



1307



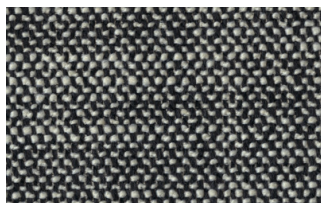
1308



1309



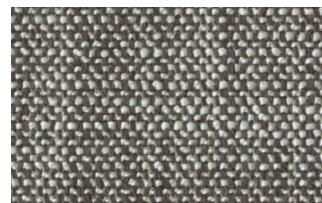
1310



1311



1313



1314

## R Flair



P321-6200-039



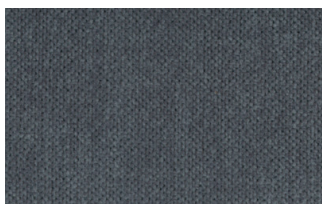
P321-6200-901



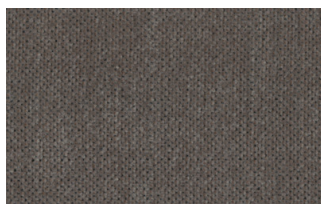
P321-6300-419



P321-6300-503



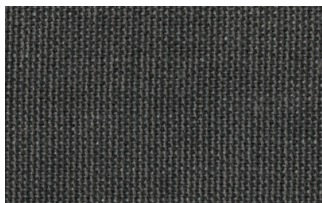
P321-6300-988



P321-6300-996

## EXTRA

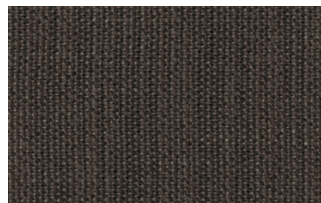
### Anice



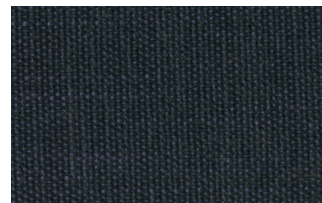
1



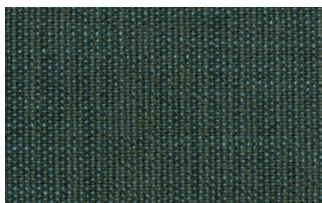
2



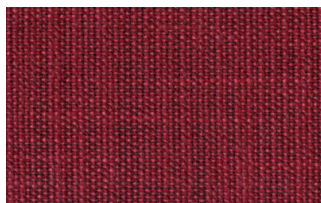
3



4



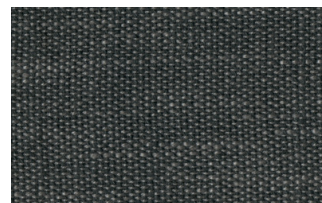
5



6



7



8





9

## Lovely



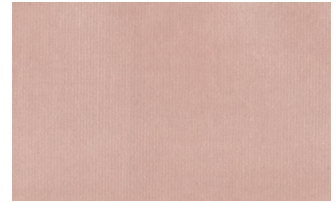
6



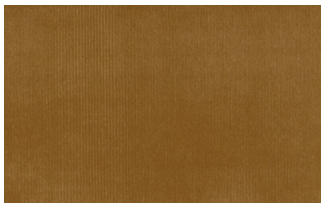
10



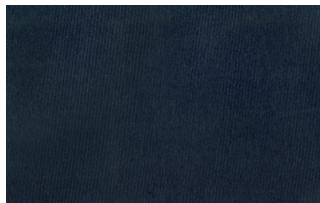
19



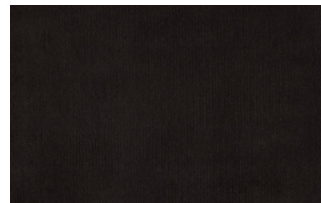
22



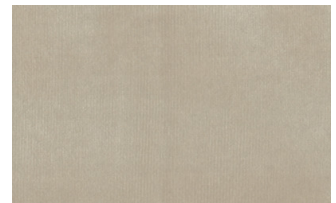
27



31



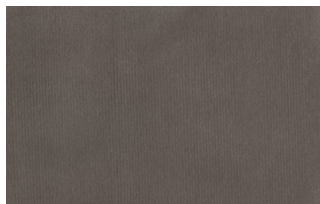
36



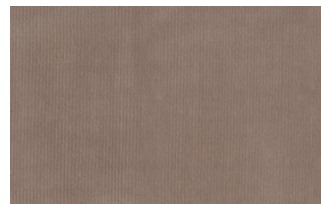
102



113

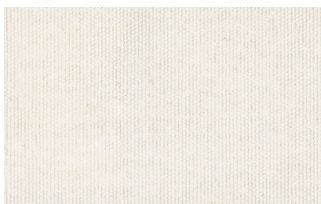


200

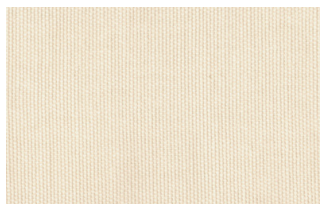


202

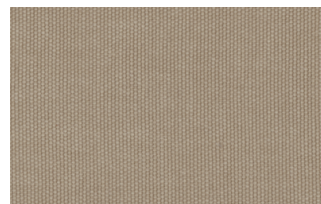
## Cosme



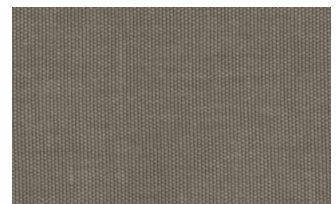
e200



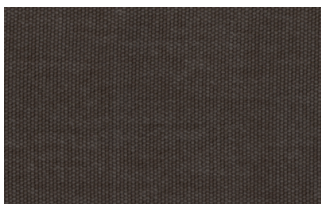
e202



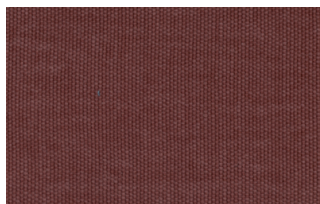
e205



e206



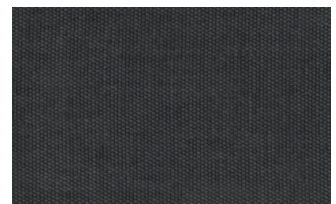
e209



e220

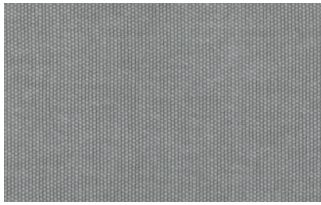


e232

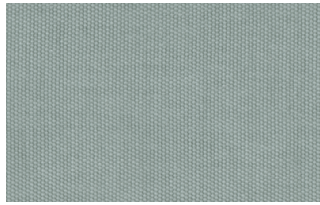


e234

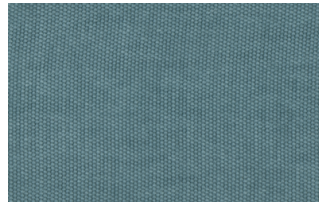




e236



e240

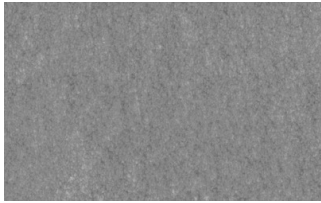


e241



e244

## Soda



29



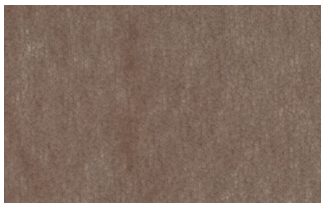
30



39



41



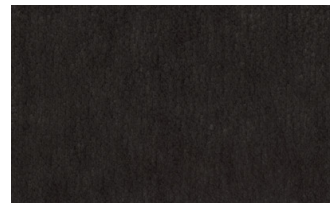
56



62



74



104

## LIGHT

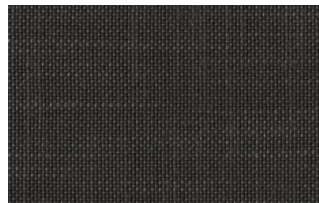
### Lima



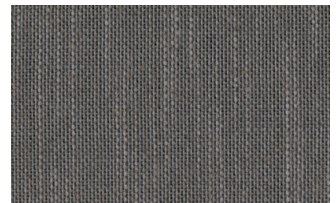
2



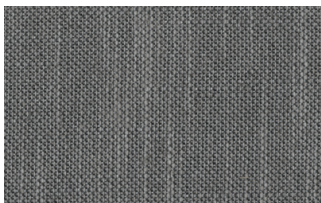
5



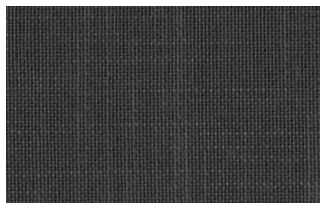
10



12



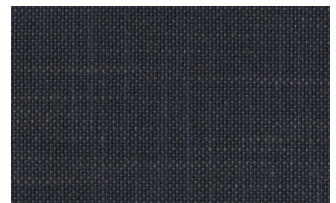
14



16



23



29



31



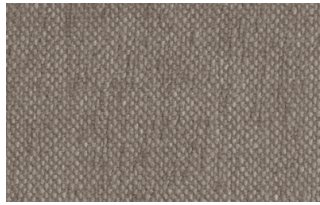
43

### Mimi





A3004



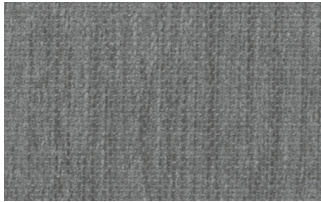
A3005



A3006



A3014



A3018

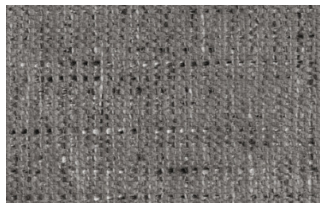


A3023

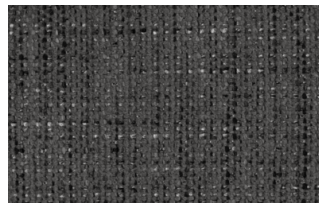
## Memphis



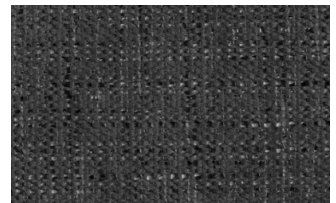
1



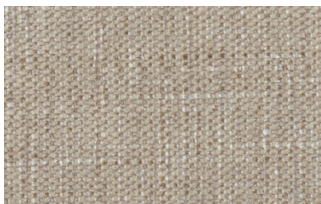
6



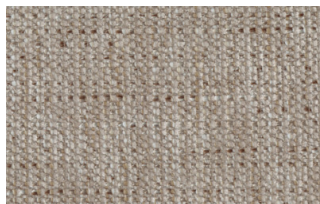
10



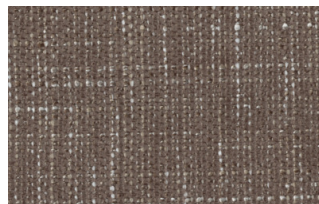
11



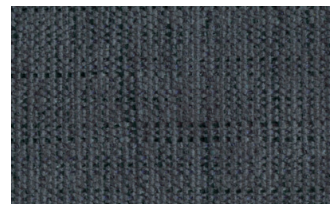
13



14



15



16

## SUPER

### Hylemt



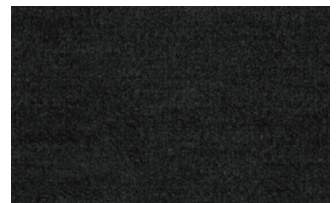
25



102



109



117



121



204



207

### Axum

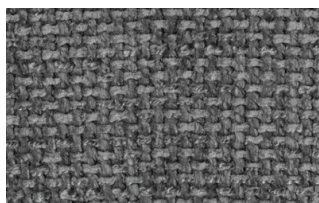




3



11



12



18



21



23



29



30

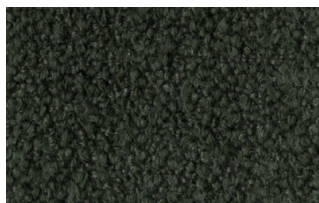
## Barnum Unito



1 bianco



2 corda



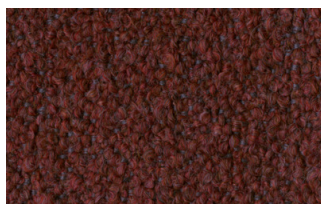
9 bosco



10 piombo



13 lavagna



23 bruciato

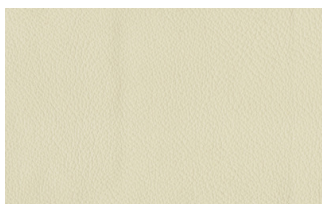


24 lana

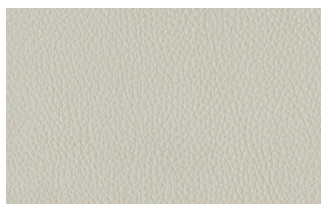
## Leathers

### K LEATHERS

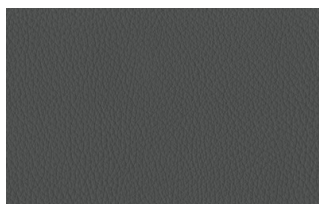
#### Leather



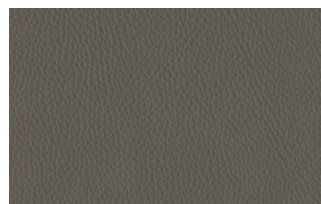
200



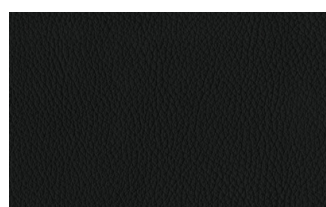
202



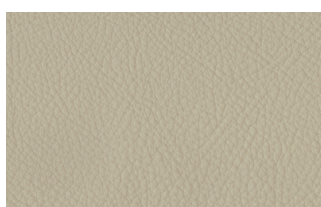
204



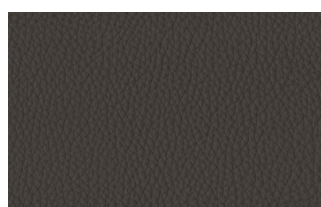
206



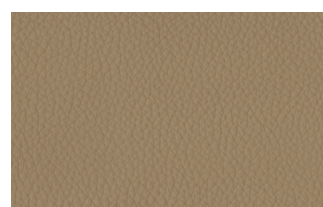
207



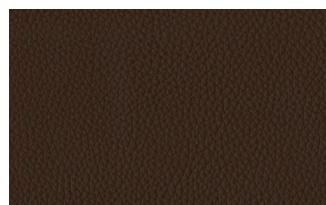
208



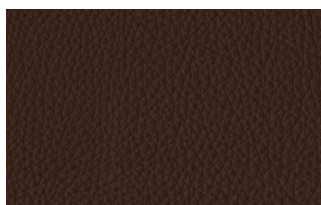
211



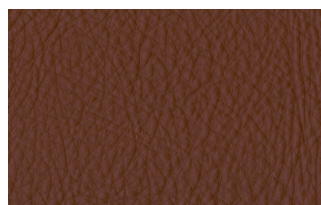
214



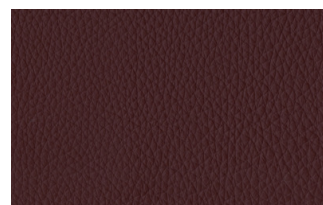
217



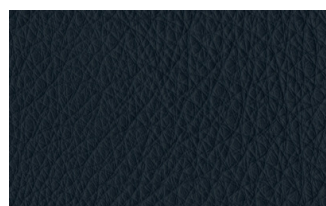
224



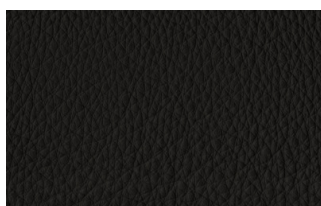
228



234



274



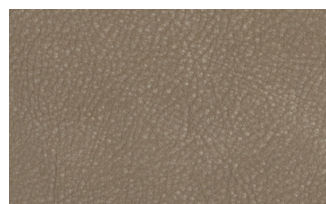
298



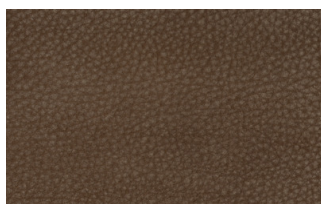
301

## W LEATHERS

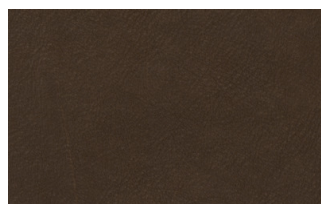
### Nabuk



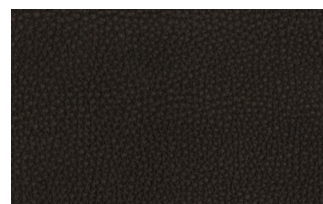
Creta



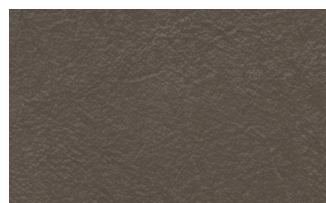
Camel



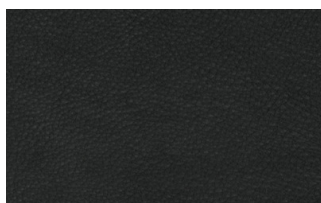
marrone



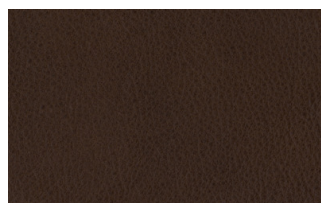
Testa di moro



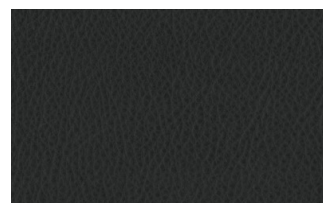
Seppia



Black



Hard leather



Grigio

## Ecoleathers

## EXTRA ECO-LEATHERS

### Vintage eco-leather





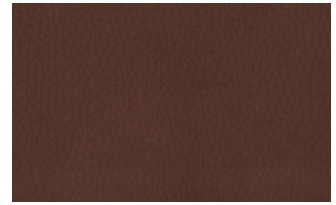
2



3



3 intreccio



4



6



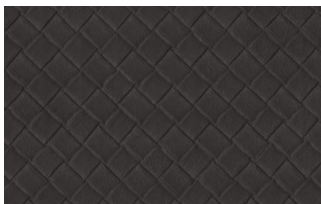
7



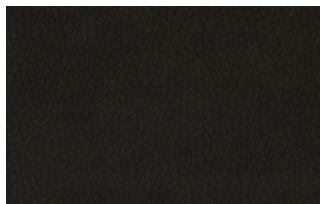
7 intreccio



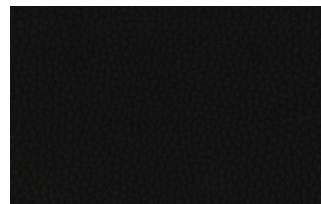
8



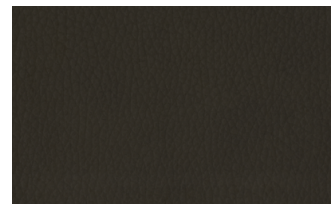
8 intreccio



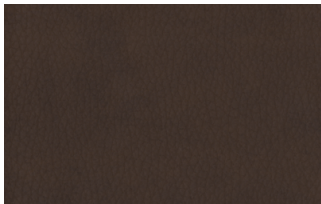
9



14



19



22